

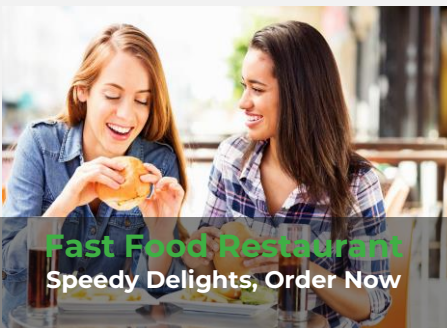
Stay Ahead with Wi-Fi 6: Fast, Reliable, and Secure

EAP600 Enterprise Access Point

- Wi-Fi 6
- High Performance
- Cloud-Managed



The EAP600 is a high-performance indoor dual-band Wi-Fi 6 Access Point (AP). With its powerful network access capability of Wi-Fi 6, EAP600 can provide increased connection density, lower latency, enhanced coverage range, and stronger security for retail stores, hotels, enterprise offices, and several business scenarios. Combined with the InCloud Manager platform, our solution provides you with more convenience in managing and monitoring your distributed EAP600 centrally and efficiently.



Features and Advantages

● Embrace New Network Experience with Wi-Fi 6

The EAP600 supports 802.11b/g/n/ac/ax standards with dual-frequency concurrency. The 5GHz band achieves a max speed of 2.4Gbps, and dual-band concurrency operation reaches 2974Mbps. Each band supports 8 SSIDs and can connect to hundreds of terminals for high-density access.



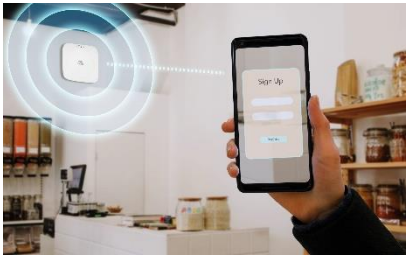
● Fast Deployment, Flexible Mesh Networking

The EAP600 supports Mesh networking, allowing devices to connect to each other and form a distributed self-organizing network. This can enhance network coverage, improve reliability, and increase flexibility. Mesh networks can automatically adjust, maintaining connectivity through alternative paths and enhancing network fault tolerance.



● Wi-Fi Portal for Value-Added Services

The authentication portal can prevent unauthorized users from accessing the network and ensure the security of network resources. At the same time, customers can customize the authentication interface to display specific brand marketing content to users on the splash page.

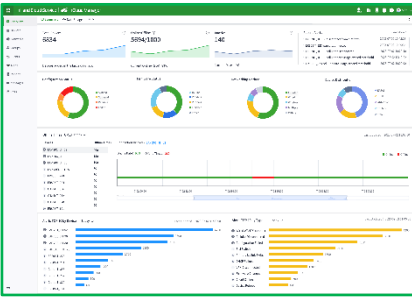


● Perfect Security Strategy for Network Escort

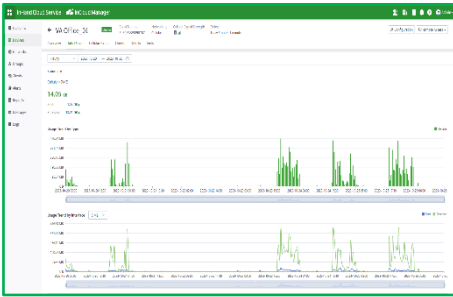
The EAP600 supports WPA-PSK/WPA/WPA2/WPA3 authentication, the isolation of guest networks and business networks, and multi-level security strategies like whitelist-based or blacklist-based MAC address filtering to protect sensitive data and critical business networks from attacks and threats.

● Simplify Control with Easy Cloud Management

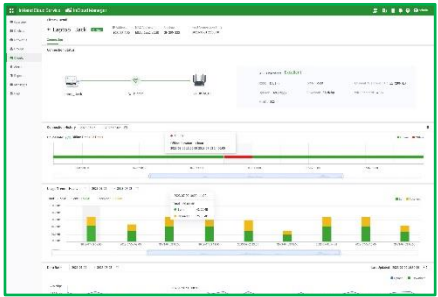
InCloud Manager SaaS service offers real-time management of distributed EAP600. Through this unified cloud platform, you can realize networking centralized monitoring, exception alerts, and remote failure diagnostics to reduce losses caused by network issues.



Centralized Management

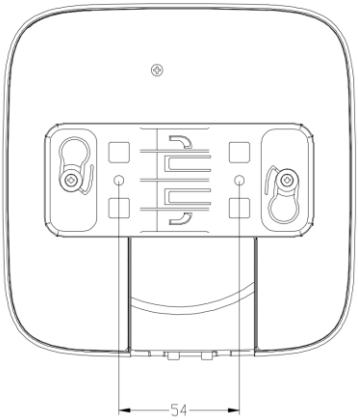
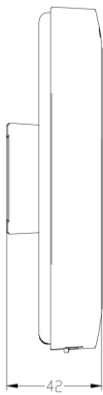
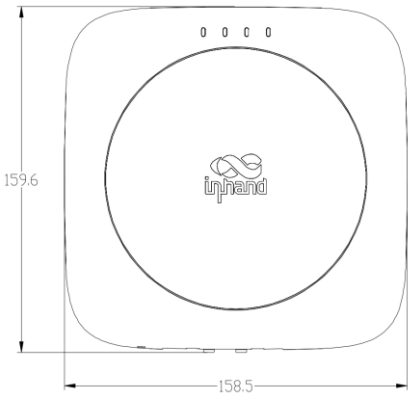


Visualized Monitor



Application Topology

Dimensions (mm)



Product Specifications

EAP600 Hardware Specifications	
Item	EAP600
Position	
Site	High-performance indoor Wi-Fi6 AP. Suitable for small to medium-sized chain branch scenarios, covering an area of 120 square meters.
Recommended users	≤150
Hardware Platform	
RAM	512 MB
FLASH	128 MB NAND
Ethernet Port	1* Gigabit Ethernet port
Bluetooth	No
Button	1* Reset button
LED	4*LED (PWR/WAN/2.4GHz/5GHz)
Antenna	2*built-in dual-frequency antenna
Power	
Power Supply	12V/2A DC; 802.3 af PD
Radio Specs	
Radio	2 x 2 MU-MIMO, dual-band concurrent maximum rate 2974Mbps 2.4GHz (802.11b/g/n/ac/ax), maximum speed 574Mbps 5GHz (802.11a/n/ac/ax) with a maximum speed of 2.4Gbps
Parameter	2.4G Radio: 802.11b:1,2,5,5 and 11 Mbps 802.11g:6,9,12,18,24,36,48 and 54Mbps 802.11n:HT20/ HT40: MCS0 ~ MCS15 (400/ 800ns GI) 802.11ac VHT20/VHT40: MCS0 ~ MCS9(400/ 800ns GI) 802.11ax HE20/ HE40: MSC0 ~ MCS11(800/ 1600ns GI) 5G Radio: 802.11a:6, 9, 12, 18, 24, 36, 48 and 54Mb/s 802.11n:HT20/ HT40: MCS0 ~ MCS15(400/ 800ns GI) 802.11ac :VHT20/VHT40/VHT80: MCS0 ~ MCS9(400/ 800ns GI) 802.11ax :HE20/ HE40/HE80/HE160: MSC0 ~ MCS11(800/ 1600ns GI)
Transmit Power	2.4GHz/5GHz:20 dBm
Antenna Gain	2.4GHz/5GHz:3 dBi
Dimensions & Installation	
Dimensions	158 * 158 * 28(mm)
Installation	Desktops, ceilings
Environment	
Storage Temp	-40 °C ~ 70°C
Operating Temp	0°C ~ 45°C
Humidity	5 ~ 95%
IP Level	IP30
Authentication	
CE, IC, FCC	

EAP600 Software Specifications	
Item	EAP600
Cloud Management	
InCloud Manager	Unified device access
	Zero-touch remote deployment
	Batch upgrade and management
Access Mode	
Network Access	Static IP /DHCP
Network & Security	
IP Protocol	IPv4/IPv6*
BSSID	Each band supports 8 SSIDs
VLAN&IP	Support for custom Wi-Fi network IP address or VLAN ID
Wi-Fi Security	WPA-PSK, WPA/Enterprise* (WAP/WAP2/WPA3)
Radio Setting	Set the bandwidth and transmit power of the radio
Guest Access	Provide visitors network designed for temporary users
Portal*	Supports portal authentication modes such as Radius,mobile phone and facebook
MAC Filtering	Support MAC address filtering based on black and white list
Mesh	Support Mesh networking between APs
Visualization	
Dashboard	Overview of device information, interface status, traffic statistics, client access and alarms
Topology*	Displays the AP upstream/downstream topology connection status
Client Monitor	Collect statistics on the traffic and connection duration of the client connected to the AP
Wi-Fi Experience	Wi-Fi client quality analysis
Mode	
Work Mode	FAT-Routing Mode/ FAT-Bridge Mode

Ordering Guide

Model	Specification
EAP600-LITE	(Global) Enterprise entry-level indoor Wi-Fi6 AP, 2.4GHz/5GHz dual RF, maximum speed up to 2974Mbps, 1* Gigabit Ethernet port

InHand Cloud-Managed Networking Solution

Our solution encompasses cloud-managed edge routers, Wi-Fi 6 AP, switches, 5G FWA/ODU cellular routers, and the InCloud Manager SaaS. By integrating top-tier IT management, IoT, 5G, and other technologies, we provide fast, secure, and user-friendly network solutions globally, enabling businesses to unlock boundless growth opportunities.



InCloud Manager



InCloud Manager

- Centralized management
- Efficient zero-touch deployment
- Simplified network configuration
- Multi-dimensional security
- Multiple intelligent strategies

5G SD-WAN Edge Router

- 5G (Sub 6)/ LTE CAT20
- Multilink Backup & Dual SIM failover
- 5*Gigabit Ethernet port, dual WAN
- 802.11ac dual-band, 1200Mbps
- SD-WAN, VLAN, VPN networking

5G Outdoor Unit

- High-speed 5G, DL 4.76Gbps, UL 1.25Gbps
- 2Gbps throughput
- 2.5G ETH, WAN/LAN, PoE
- IP67, -30 ~ 70° C, GPS
- Wall & pole mounting with adjustable angles

About Us

InHand Networks is a leading IoT solutions provider founded in 2001, dedicated to driving digital transformation across industries and empowering customers to unlock their full potential and achieve accelerated growth.

We specialize in delivering industrial-grade connectivity solutions for diverse sectors, such as enterprise networks, industrial and building IoT, digital energy, smart commerce, and mobility. Our comprehensive product portfolio and services cater to various applications worldwide, including smart manufacturing, smart grid, intelligent transportation, smart retail, etc. With a global footprint spanning over 60 countries, we serve customers in China, the United States, France, Germany, the United Kingdom, Italy, and beyond.



43671 Trade Center Place, Suite 100, Dulles,
VA 20166, USA
T: +1 (703) 348-2988
E: info@inhand.com
www.inhand.com