

Empowering Connections, Sharing Convenience

FV700-PS01 AI Vending Machine

•Edge AI Recognition

•Large Capacity

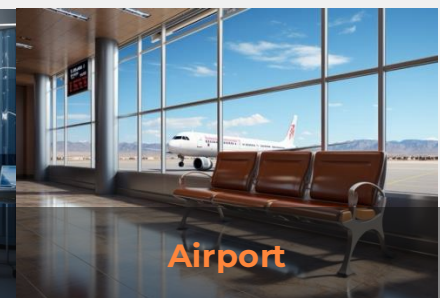
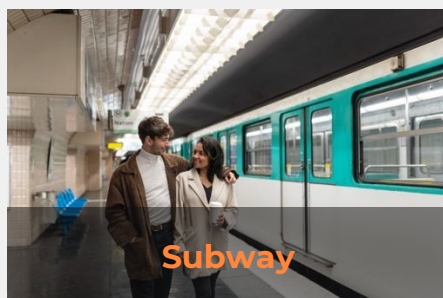


The FV700 is an AI vending machine product in response to the market demand for unmanned retail self-service vending terminals.

With its spacious storage capacity, FV700 minimizes restocking frequency, enhancing convenience. Featuring an open-door shopping sales method, the FV700 encourages increased purchases, resulting in higher profits.

Additionally, its comprehensive features, sturdy construction, and efficient air-cooled unit ensure worry-free operation and energy efficiency.

Meanwhile, with the [vending cloud management platform](#), operators can achieve remote monitoring and efficiently meet the digitalization needs of operations.



Features and Benefits

Product Excellence

Expanded Storage

Holds twice as much as traditional machines for bigger profits.

Portable Design

Lightweight design for cost-effective transport.

AI-Powered Visual Recognition

Advanced video recognition boosts sales.

Open-Shelf Design

Flexibly stores beverages of various sizes while preventing jams.

Hardware Core & Technical Support

Edge AI Algorithm

Ensures instant, precise order processing for an improved customer journey.

Constant Connectivity

Maintains 24/7 operation, ensuring uninterrupted business.

Trusted Quality

Built with materials from leading manufacturers for lasting durability.

Dedicated Support

Expert assistance for any issue.



AI Vending Machine Management System

Providing software for remote management capabilities, enhancing operational efficiency, and enabling operators to sell more and spend less.

Always Accessible:

Stay in control anytime, anywhere, with real-time insights into your vending machine's status, ensuring your business never misses a beat.

Simplified Workflow:

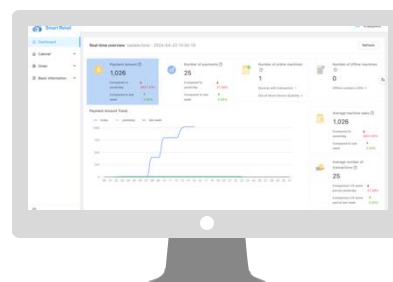
Our user-friendly interface simplifies complex tasks, saving your time.

Remote Functionality:

Adjust settings, prices, and promotions remotely to maximize profitability and cater to your customers' needs.

Data-Driven Decisions:

Make informed decisions with comprehensive reporting tools that provide insights into sales trends and customer behavior.



Cloud Platform

(ai.vending.inhand.com)

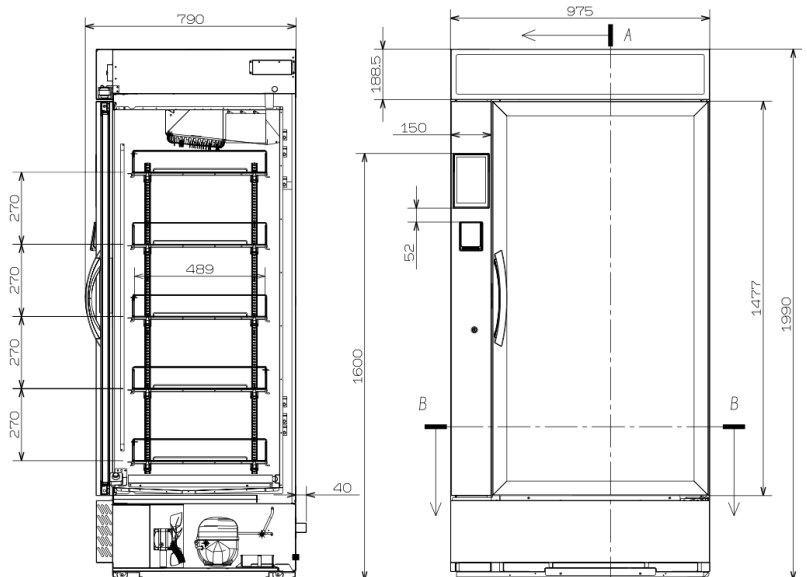


Mobile APP

Product Specifications

FV700-PS01	
Recognition Scheme	CV Dynamic recognition
Capacity	672L 23.72 cu.ft
Inventory and bearing capacity	Each layer can accommodate 7 rows by 8 columns of beverages (500ml bottled water), Single layer can support up to 48kg
No. of Layers	5
Cellular Network	4G & Wi-Fi
Authorization Method	POS
Touch screen	8-inch touch screen
Dimensions (mm)	975 (width) *830 (depth) *1990 (height) 38.39 " x32.68 "x78.35 "
Cooling Temperature	3~+12°C 37.4~+53.6°F
Refrigeration Method	Air cooling
Power Consumption	6kWh/24H
Power	650W
Total Weight	170kg 374.18 lbs
Glass Door	Thickened, double-layer tempered coated glass

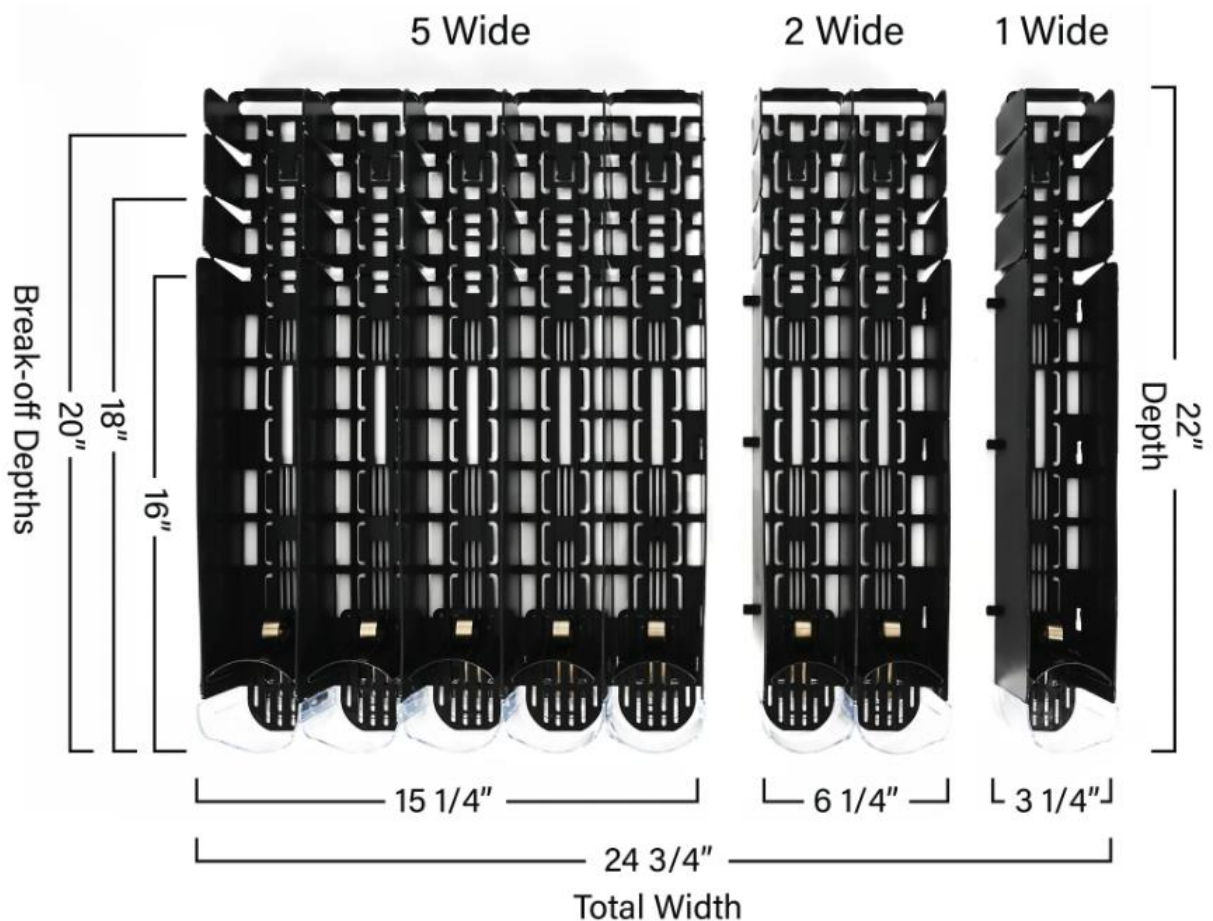
Product appearance and size



Product Specifications

BO-VISI-820	
Quantity	5
Width	24 3/4 Inches
Depth	22 Inches
Color	Black
Container Size	20 -25 Ounces
Features	Made in America
Material	Plastic
Number of Lanes	8 Lanes
Shape	Rectangle
Style	Adjustable For Single Shelf
type	Spring Fed Organizers

Product appearance and size



Ordering Guide

Model Number: FV-<BBB>-<XXX>-<C>-<E>

Model	<BBB>: Capacity	XXX: Payment Method	<C><E>: Other
FV700-PS01-FQ09-BO	672L 23.72 cu.ft	POS	None

About Us

InHand Networks is a leading IoT solutions provider founded in 2001, dedicated to driving digital transformation across industries and empowering customers to unlock their full potential and achieve accelerated growth. We specialize in delivering industrial-grade connectivity solutions for diverse sectors, such as enterprise networks, industrial and building IoT, digital energy, smart commerce, and mobility.

Our comprehensive product portfolio and services cater to various applications worldwide, including smart manufacturing, smart grid, intelligent transportation, smart retail, etc. With a global footprint spanning over 60 countries, we serve customers in China, the United States, France, Germany, the United Kingdom, Italy, and beyond.

Contact Us

3650 Concorde Pkwy, Suite 200 Chantilly,
VA 20151, USA
T: +1 (703) 348-2988
E: info@inhand.com
www.inhand.com