

Powerful connectivity, convenient management

# ES620 Enterprise Switch

- 28\*GbE RJ45
- PoE
- High Performance
- Cloud-Managed



The ES620 switch features 24 gigabit ports and 4 combo ports, supporting PoE on all 24 ports. It offers exceptional data handling capabilities, ensuring stable performance in large-scale data transfer and complex network environments, making it a reliable and convenient solution for enterprise networking. Its extensive access capacity and powerful PoE capability make it ideal for hotels, campuses, and dormitories. Additionally, the device is managed through the InCloud Manager platform, providing a comprehensive visual interface for easy network monitoring, simplified configuration, and enhanced management, helping businesses reduce costs and improve efficiency.



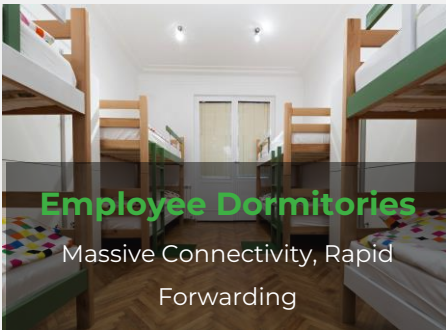
**Hotel Chains**  
Reliable connectivity, robust power supply



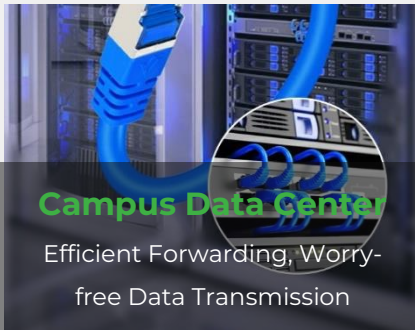
**Corporate Offices**  
Stable and efficient, ensuring smooth operations



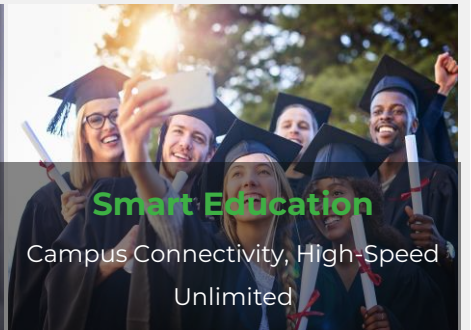
**Digital Classroom**  
Connecting the Future, Inspiring Intelligence



**Employee Dormitories**  
Massive Connectivity, Rapid Forwarding

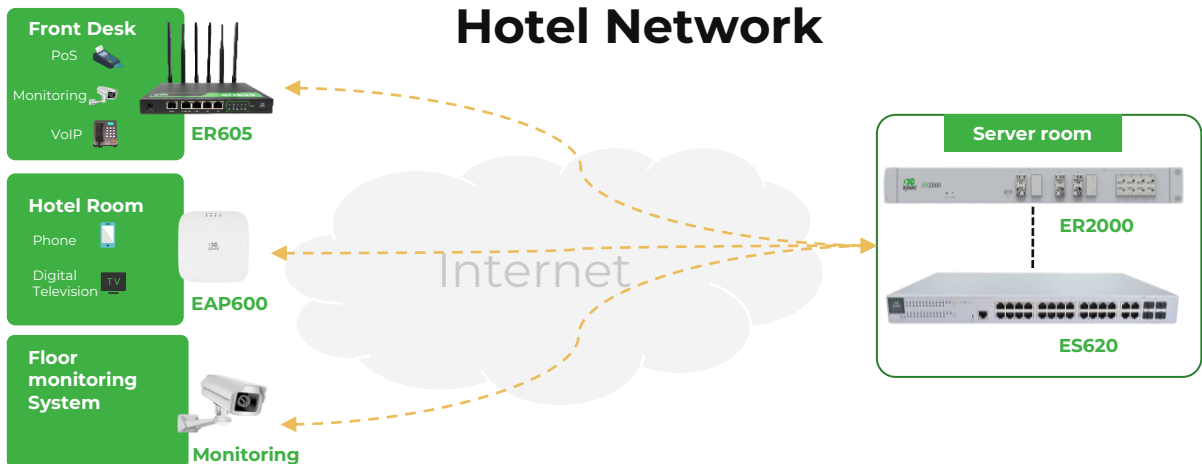


**Campus Data Center**  
Efficient Forwarding, Worry-free Data Transmission



**Smart Education**  
Campus Connectivity, High-Speed Unlimited

## Solution



# Features and Advantages

## High-performance data forwarding

The ES620 switch stands out with its high-performance forwarding capabilities, efficiently handling large-scale data traffic. It ensures exceptional performance even in complex network environments, guaranteeing stable connections and fast access for every terminal device, significantly enhancing user experience.



## 28\*Gigabit Ethernet ports

The ES620 switch is equipped with 28 Gigabit Ethernet ports, providing robust network connectivity for businesses. It is particularly suitable for network access in hotels, dormitories, campuses, and similar environments



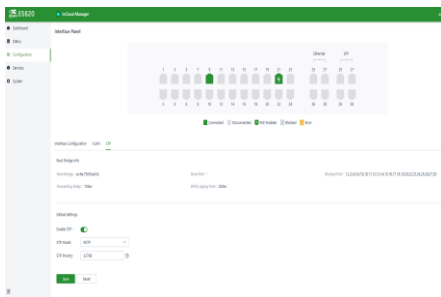
## Smart PoE, powerful power supply

The ES620's 24 ports support simultaneous power supply, with a maximum output of 30W per port and a total maximum output of 450W for the entire device. While ensuring network access, it provides continuous and stable power for cameras, APs, and other devices.



## Simple configuration

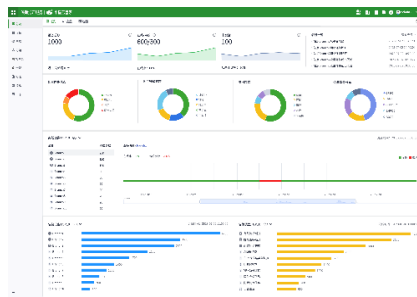
The ES620 supports a graphical user interface, making configuration simple and intuitive. Even those without professional IT skills can easily master it



Graphical user interface

## Multidimensional visual monitoring

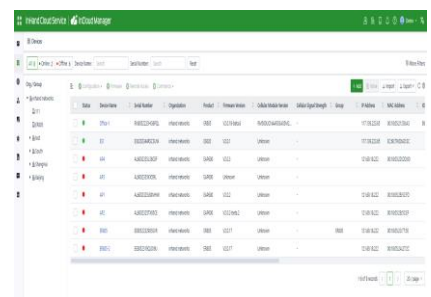
The ES620 supports multidimensional visual charts, including online history, network status, interface status, device alerts, and events. This helps IT personnel fully understand the network's operation, improving maintenance efficiency



Visual charts

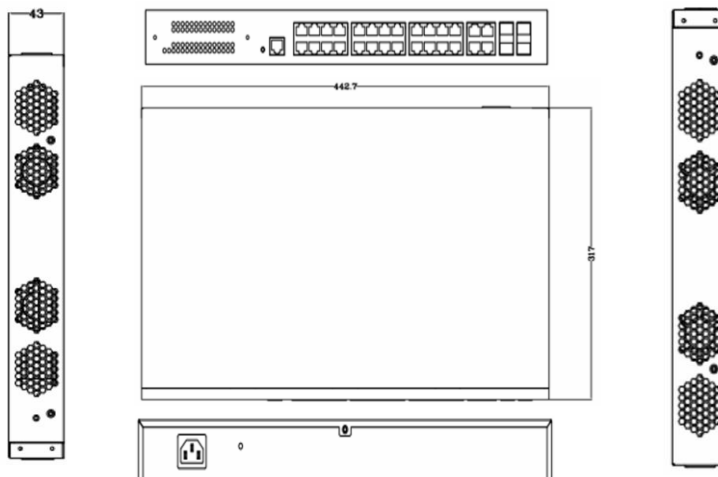
## Centralized management

InCloud Manager supports the integration of ER series routers, ES series switches, and EAP series wireless products, allowing users to manage and maintain networks across various scenarios through a single platform



Centralized management

# Dimensions (mm)



Dimensions: 440 \* 315 \* 44(mm)

# Product Specifications

ES620 Hardware Specifications	
Model	ES620
Hardware Performance	
Switching capacity	56 Gbps
Packet forwarding rate	41 Mpps
RAM	128 MB
FLASH	32 MB
Appearance Description	
Ethernet port	28*GbE RJ45
PoE	802.3 af/at 24*PoE
Console	1* Console
Reset	1*Reset Button
LED	1* Power 1* System 24*PoE Status 28*Link Status
Fan	4*Built-in fans
Power	
Power Supply	100-240V AC,50-60Hz
Power Consumption	Total power consumption 450 W PoE power consumption 425 W
Environment	
Operating Temperature	0° C to + 45° C
Storage Temperature	-40° C to +70° C
Humidity	95%RH @ 40° C
IP Level	IP20
EMC	
EMC	Level 2
Dimensions & Installation	
Dimensions	440*315*44 mm
Material	Metal
Installation	1U Rack
Certification	
In Planning:	CE、FCC、IC

## ES620 Software Specifications

Cloud Management	
InCloud Manager	Unified device access Zero-touch remote deployment Batch upgrades and configuration deployment Cloud-connected remote maintenance Two-factor authentication
Visualization	
Dashboard	Device statistics, connectivity status, connection quality analysis (latency, packet loss, throughput) Traffic statistics, interface status, client statistics analysis
Network Function	
IP Protocol	IPv4
Network Protocol	vlan, stp, rstp,port management, traffic control, 802.1X*, PoE management, link aggregation*, loop detection*, broadcast storm*
MAC Address	8K
Maintenance	
Upgrade	Support for scheduled upgrades
Logs	Supports operation logs and diagnostic logs
Events	Supports user login, connection/disconnection, device restart, and other operational events
Alerts	Supports SMS and email alerts
Diagnostic	ICMP, Tracert ,Tcpcdump

Features marked with \* are under development

## Ordering Guide

Model	Model code: ES620-<WMNN>
	<WMNN>: Hardware Specifications
ES620-24P-4F	<p>Global</p> <p>The ES620 enterprise-grade Layer 2 cloud-managed switch features a switching capacity of 56Gbps and a packet forwarding rate of 41Mpps, making it suitable for network access in hotels, dormitories, campuses, and similar environments</p> <p>24* GbE RJ45 Ports (802.3 af/at poe supply)</p> <p>4* Combo Ports</p>

## InHand Cloud-Managed Networking Solution

Our solution encompasses cloud-managed edge routers, Wi-Fi 6 AP, switches, 5G FWA/ODU cellular routers, and the InCloud Manager SaaS. By integrating top-tier IT management, IoT, 5G, and other technologies, we provide fast, secure, and user-friendly network solutions globally, enabling businesses to unlock boundless growth opportunities.



### InCloud Manager

- Centralized management
- Efficient zero-touch deployment
- Simplified network configuration
- Multi-dimensional security
- Multiple intelligent strategies

### 5G SD-WAN Edge Router

- 5G (Sub 6)/ LTE CAT20
- Multilink Backup & Dual SIM failover
- 5\*Gigabit Ethernet port, dual WAN
- 802.11ac dual-band, 1200Mbps
- SD-WAN, VLAN, VPN networking

### Enterprise EAP600

- Wi-Fi6
- Dual-band, multiple SSIDs
- Maximum speed up to 3000 Mbps
- Mesh network, seamless roaming
- Cloud Management

## About Us

InHand Networks is a leading IoT solutions provider founded in 2001, dedicated to driving digital transformation across industries and empowering customers to unlock their full potential and achieve accelerated growth.

We specialize in delivering industrial-grade connectivity solutions for diverse sectors, such as enterprise networks, industrial and building IoT, digital energy, smart commerce, and mobility. Our comprehensive product portfolio and services cater to various applications worldwide, including smart manufacturing, smart grid, intelligent transportation, smart retail, etc. With a global footprint spanning over 60 countries, we serve customers in China, the United States, France, Germany, the United Kingdom, Italy, and beyond.



3650 Concorde Pkwy, Suite 200,  
Chantilly, VA 20151, USA  
T: +1 (703) 348-2988  
E: info@inhand.com  
www.inhand.com