

Compact and agile, easy to deploy

ES220 Economical Switch

• 5/8 GbE Ports

• PoE

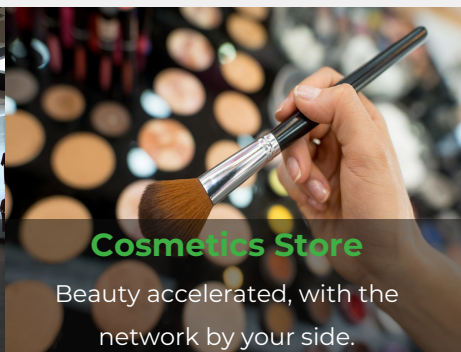
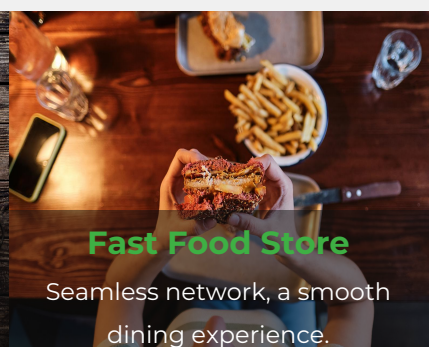
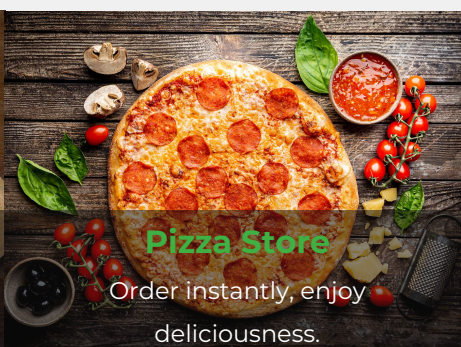
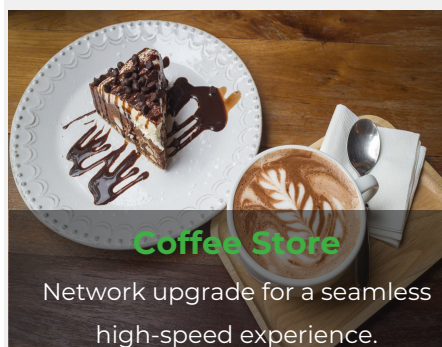
• Plug and play

• Unmanaged



The ES220 series is specifically designed for chain branches and small to medium-sized business network scenarios, offering a cost-effective unmanaged switch solution. This series provides 5-port and 9-port models, supporting up to 8 PoE output ports to flexibly meet the LAN device access needs of retail stores and small office environments. It effectively reduces deployment costs while covering diverse device access scenarios.

The ES220 series features an unmanaged design with plug-and-play functionality, making it simple to use without any configuration required. Its compact and lightweight form factor allows for more flexible installation, making it ideal for network expansion in chain branches and small to medium-sized business environments.



Features and Advantages

- Plug and play, quickly expand network access.

The ES220 series requires no complex configuration—simply connect the power and network cables, and it will run automatically. It helps users quickly complete network deployment, whether in chain stores or small to medium-sized businesses. The ES220 easily connects multiple devices, significantly improving operational efficiency while reducing reliance on professional technical expertise.



- Multiple device connections, easy traffic forwarding

The ES220 series switches support store-and-forward mode with a maximum switching capacity of 18Gbps. All ports support automatic polarity correction and half-duplex/full-duplex modes, ensuring excellent compatibility and seamless access for terminal devices such as digital signage, cameras, printers, and computers.



- PoE power supply, continuous output.

Some models of the ES220 series support PoE functionality, allowing both power and data to be transmitted through a single network cable. This simplifies the connection of devices such as access points and network cameras to the network, eliminating the need for separate power cables and providing a more convenient solution for challenging wiring scenarios.



- One-click VLAN switching feature, ensuring network security

The ES220-4P-IT supports a one-click VLAN function, which can be quickly enabled with a simple toggle operation, eliminating the need for complex configurations to achieve effective LAN isolation. This feature not only helps prevent broadcast storms and enhances network security and performance but also greatly simplifies user operations, offering a solution that is both easy to use and hassle-free.



- Compact and sleek, adaptable to various deployment scenarios

The ES220 series switches feature a compact design with a minimalist and small footprint, making them suitable for deployment in various space-constrained scenarios. They can be placed on a desktop or installed in tight spaces. In environments such as restaurants and other chain stores, the ES220 switches seamlessly integrate, offering flexible deployment options.



- Metallic casing, stable operation.

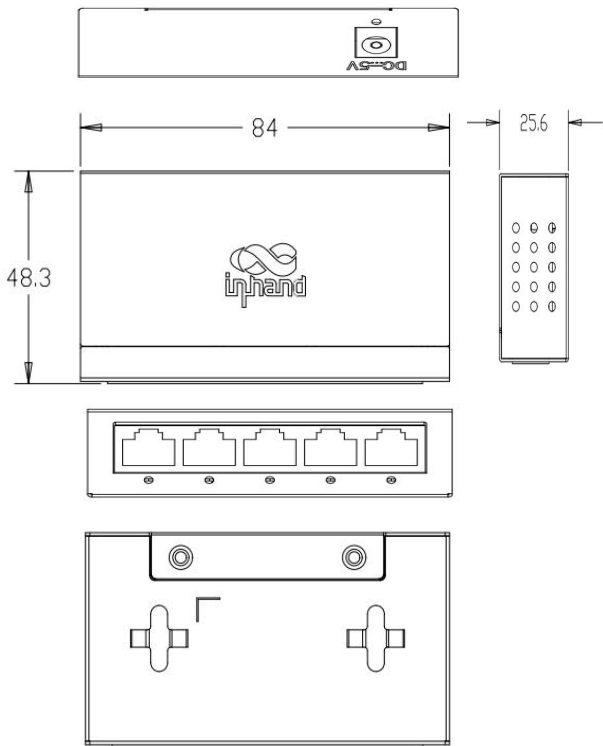
The ES220 series switches feature a full-metal enclosure, providing robust and durable external protection. The optimized internal structure enhances heat dissipation performance, ensuring stable device operation and delivering reliable network stability for users.



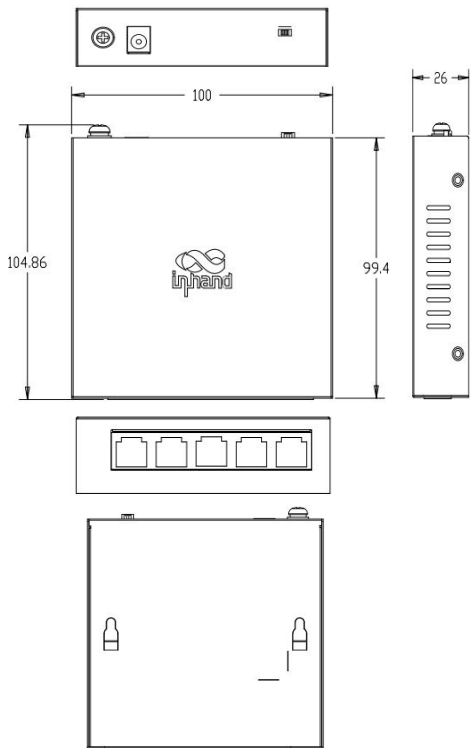
Product Specifications

ES220-5T	
Ports	
Ports	5*10/100/1000Mbps
PoE	No
Physical	
Metal casing	Yes
Cooling	Fanless cooling
Dimensions	84x47.8x25.6mm
Installation	Desktop , wall-mounted
Hardware	
Switching Capacity	10Gbps
MAC Address Table	2K
Polarity Reversal	Auto MDI/MDIX
Environmental	
Operating Temperature	0° C to +40° C
Storage Temperature	-10° C to +70° C
Humidity	10%~90%
Indicators	
LED	Power indicator, network port indicator
Power	
Input	5V-1A DC
Certification	
Certification	CE, FCC
Warranty	
Warranty	1 year

Dimensions (mm)



ES220-4P-1T	
Ports	
Ports	5*10/100/1000Mbps
PoE	Ports 1-4 support the 802.3 af/at standard, with a total PoE output of 52W
Physical	
Metal casing	Yes
Cooling	Fanless cooling
Dimensions	100x99.4x26mm
Installation	Desktop , wall-mounted
Hardware	
Switching Capacity	10Gbps
MAC Address Table	2K
One-click VLAN	Ports 1-4 are isolated from each other and simultaneously connected to port 5.
Polarity Reversal	Auto MDI/MDIX
Environmental	
Operating Temperature	0° C to +40° C
Storage Temperature	-10° C to +70° C
Humidity	10%~90%
Indicators	
LED	Power indicator, network port indicator, poe indicator
Power	
Input	55V-1.3A DC
Certification	
Certification	CE, FCC
Warranty	
Warranty	1 year

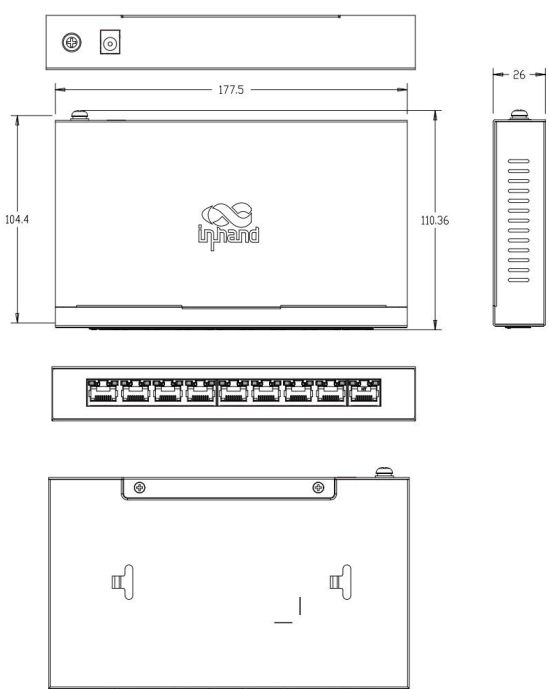
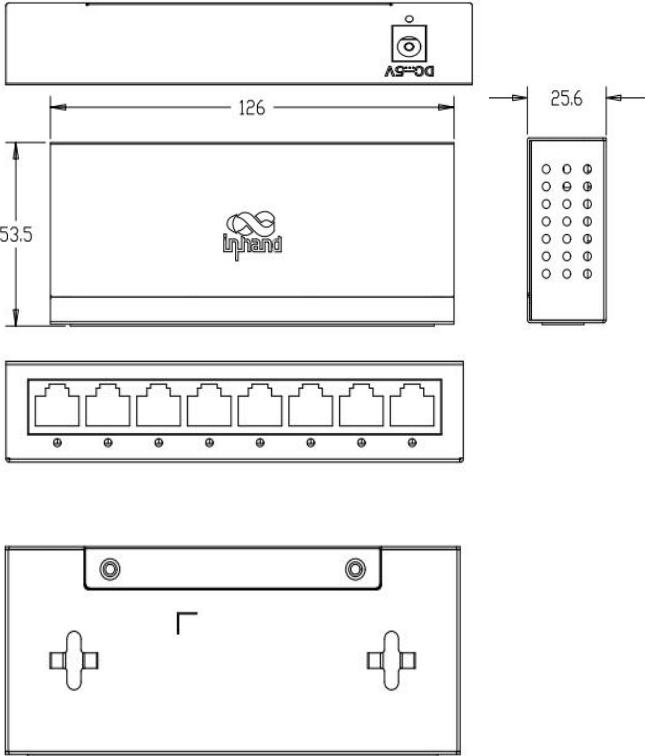


Product Specifications

ES220-8T	
Ports	
Ports	8*10/100/1000Mbps
PoE	No
Physical	
Metal casing	Yes
Cooling	Fanless cooling
Dimensions	126*53*25.6mm
Installation	Desktop , wall-mounted
Hardware	
Switching Capacity	16Gbps
MAC Address Table	2K
Polarity Reversal	Auto MDI/MDIX
Environmental	
Operating Temperature	0° C to + 40° C
Storage Temperature	-10° C to + 70° C
Humidity	10%~90%
Indicators	
LED	Power indicator, network port indicator
Power	
Input	5V-1A DC
Certification	
Certification	CE, FCC
Warranty	
Warranty	1 year

ES220-8P-1T	
Ports	
Ports	9*10/100/1000Mbps
PoE	Ports 1-8 support the 802.3 af/at standard, with a total PoE output of 120W
Physical	
Metal casing	Yes
Cooling	Fanless cooling
Dimensions	178x104x26mm
Installation	Desktop , wall-mounted
Hardware	
Switching Capacity	16Gbps
MAC Address Table	2K
Polarity Reversal	Auto MDI/MDIX
Environmental	
Operating Temperature	0° C to + 40° C
Storage Temperature	-10° C to + 70° C
Humidity	10%~90%
Indicators	
LED	Power indicator, network port indicator, poe indicator
Power	
Input	55V-2.55A DC
Certification	
Certification	CE, FCC
Warranty	
Warranty	1 year

Dimensions (mm)



Ordering Guide

Model	Model code: ES220-<WMNN>
	<T>:Gigabit Ethernet; <P>:PoE
ES220-5T	Global ES220-5T is a unmanaged Layer 2 unmanaged switch, supporting 5*GbE ports.
ES220-4P-1T	Global The ES220 is an unmanaged Layer 2 switch with 5 Gigabit ports and a maximum PoE power output of 52W.
ES220-8T	Global ES220-8T is a unmanaged Layer 2 unmanaged switch, supporting 8*GbE ports.
ES220-8P-1T	Global ES220-8T is a unmanaged Layer 2 unmanaged switch, supporting 9*GbE ports, 8 PoE-powered ports, with a total power output of 120W.

About Us

InHand Networks is a leading IoT solutions provider founded in 2001, dedicated to driving digital transformation across industries and empowering customers to unlock their full potential and achieve accelerated growth.

We specialize in delivering industrial-grade connectivity solutions for diverse sectors, such as enterprise networks, industrial and building IoT, digital energy, smart commerce, and mobility. Our comprehensive product portfolio and services cater to various applications worldwide, including smart manufacturing, smart grid, intelligent transportation, smart retail, etc. With a global footprint spanning over 60 countries, we serve customers in China, the United States, France, Germany, the United Kingdom, Italy, and beyond.



3650 Concorde Pkwy, Suite 200
Chantilly, VA 20151, USA
T: +1 (703) 348-2988
E: info@inhand.com
www.inhand.com