

Advanced 5G Cellular Router

ER815 Edge Router

• 5G

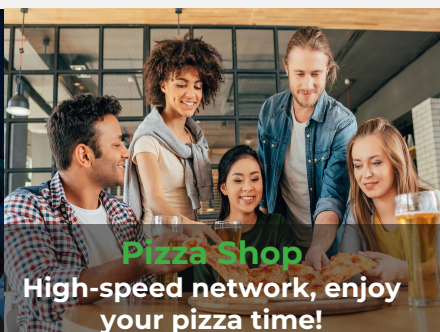
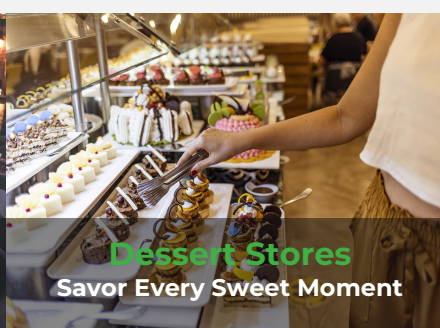
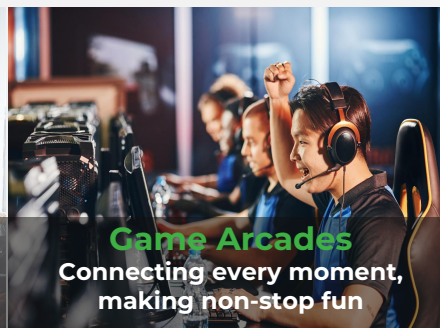
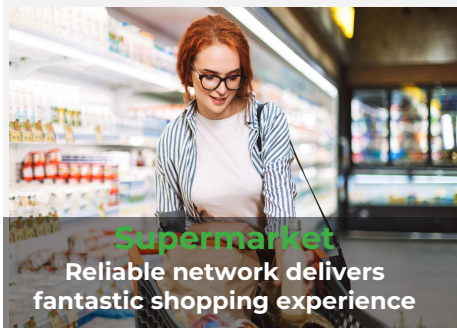
• Cloud-Managed

• Wi-Fi6

• SD-WAN



The InHand ER815 is a versatile networking solution that connects stores and offices to the network through various 5G/4G cellular or wired broadband options, ensuring uninterrupted store operations and productivity. Equipped with 2.5GbE port and 3000Mbps Wi-Fi 6 LAN access, the ER815 can support network access for a wide range of digital terminals, offering them excellent network performance and high availability. Organizations across multiple industries can rely on the ER815 to achieve SD-WAN cross-branch access and remote maintenance of terminal devices



Features and Advantages

● Plug & Play Multifunctional Router

The ER815 edge router provides wired, cellular, and Wi-Fi networking methods, ensuring fast network access and high availability with multiple link-switching strategies.

● Convenient Cellular Access with High-speed 5G

Paired with a 5G cellular module supporting DL 2.4G and UL 900M, the ER815 can provide high-bandwidth, low-latency network solutions for various commercial scenarios.

● High-speed Wi-Fi6

The ER815 supports dual-band Wi-Fi 6 with 2.4GHz and 5GHz, offering a maximum rate of up to 3000Mbps. It also supports multiple SSIDs and various encryption settings.



● SD-WAN Boosts Fast Branch Interconnection

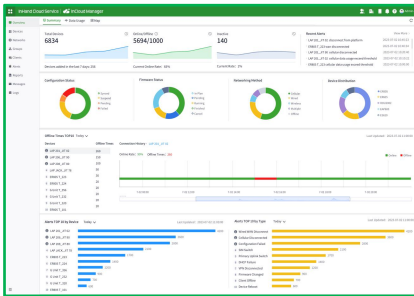
ER815 combined with InCloud Manager can quickly build SD-WAN networking to realize branch interconnection, offering you more flexibility and cost efficiency compared to traditional methods.

● Outstanding Reliability

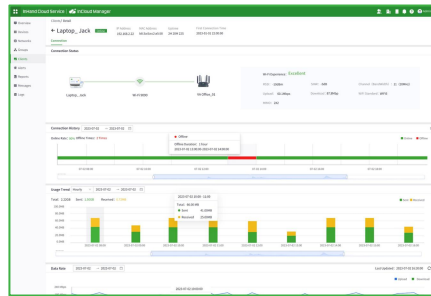
With automatic failover and load balancing, you can easily build redundancy and backup systems to minimize single points of failure for seamless service continuity and minimal downtime.

● Centralized Management for Visualized Insights

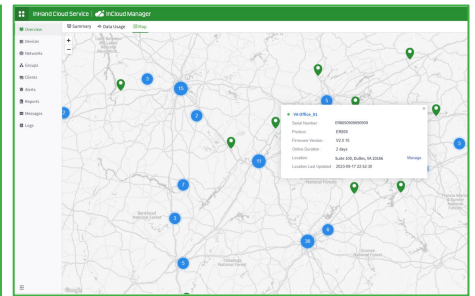
The solution helps you monitor WAN, access, and applications with end-to-end visibility all in InCloud Manager for valuable insights to optimize the network and identify areas for improvement.



Centralized Management

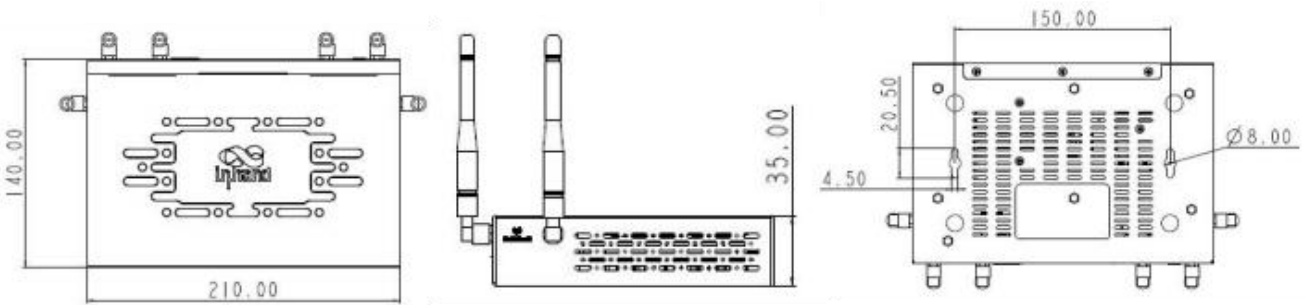


Visualized Monitor



Zero-touch Deployment

Dimensions (mm)



Dimensions: 210 * 140 * 35 (mm)

Product Specifications

| ER815 Hardware Specifications | |
|---|---|
| Hardware | |
| Throughput | 1Gbps |
| IPsecVPN Throughput | 300Mbps |
| Recommended No. of Users | 150-200 |
| RAM | 512 MB |
| Flash | 8 GB |
| Interfaces | |
| Cellular | 5G SA DL:2.4Gbps,UL:900Mbps, 5G NSA DL:3.4Gbps,UL:550Mbps LTE DL:1.6Gbps,UL:200Mbps |
| Ethernet Port | WAN:1*2.5G; LAN:4*GbE Ports WAN:1*2.5G,1*GbE; LAN:3*GbE Ports Supports WAN/LAN switching and dual WAN |
| Reset Button | Pinhole reset button |
| SIM Card | Dual-NANO SIM; eSIM(Optional) |
| Antenna Connector | 4G: SMA x2; Wi-Fi: RP-SMA x 2 5G: SMA x4; Wi-Fi: RP-SMA x 2 |
| Wi-Fi | |
| Standard | Wi-Fi 802.11a/b/g/n/ac/ax |
| Maximum Rate | 3000 Mbps |
| Transmission Power | 2.4GHz:21dBm 5GHz:21dBm |
| Antenna Gain | ≤5 dBi |
| Power | |
| Standby Power | 3A@12V |
| Peak Power | ≤18W |
| Environment | |
| Storage Temp | -40 ~ 85℃ |
| Ambient Humidity | 5 ~ 95% (non-condensing) |
| Working Temp | -10 ~ 50℃ |
| IP Level | IP20 |
| Indicator | |
| LED | Power, Network, 5G Wi-Fi, 2.4G Wi-Fi |
| EMC | |
| EMC | level 2 |
| Mechanical Specs | |
| Dimensions | 210 * 140 * 35(mm) |
| Weight | 1.25 kg |
| Installation | Bracket mount, wall mount |
| Certification | |
| In Plan*: CE,FCC,IC,PTCRB,AT&T,Verizon,T-Mobile | |

| ER815 Software Features | |
|-------------------------|---|
| Cloud Management | |
| InCloud Manager | Unified device access Zero-touch remote deployment Bulk remote upgrades Configuration deployment SD-WAN networking Connector remote maintenance Two-factor authentication |
| Visualization | |
| Dashboard | Device connectivity status Traffic statistics Cellular signal statistics Interface status Client statistics and analysis |
| Uplink Management | |
| Network Access | 5G/4G, wired, Wi-Fi |
| Dialing Services | PPPoE, cellular automatic redial, dual SIM switching, APN configuration |
| Intelligent Links | Real-time link detection |
| Network Functions | |
| IP Protocols | IPv4,IPv6 |
| Network Protocols | VLAN,DHCP (Server/Client) , DHCP Snooping, DNS, URL Filtering, DDNS, Fixed Address allocation, IP Passthrough, STP, ARP, ICMP |
| VPN | IPsec VPN, L2TP VPN, VXLAN, GRE, Open VPN* |
| SD-WAN | Support SD-WAN networking |
| Routing | Static routing |
| Wi-Fi | Supports multiple SSID modes SSID VLAN attributes SSID hiding, guest mode, and custom splash portal Encryption methods: WPA, WPA2, WPA-PSK, WPA2-PSK |
| Security | |
| Firewall | 3L inbound/outbound rules Port forwarding SNAT, DNAT Remote access control Black and white list filtering Domain filtering Portal authentication 802.1 X |
| Reliability | |
| Traffic Shaping | QoS based on link, IP, and protocol |
| Upgrades | Supports scheduled upgrades |
| Logs | Supports runtime logs, diagnostic logs |
| Events | Supports user logins, connection disconnects, device reboots, and other operational events |
| Alarms | Supports local email alarms on the device Supports platform SMS and email alarms |
| Diagnostic Tools | ICMP, packet capture, tracer |

Ordering Guide

| Model | | Model code: ER815-<WMNN>-<WLAN/NA> | <WLAN/NA>: Wi-Fi |
|----------------------|--|---|-------------------------------|
| | | <WMNN>: Cellular Type & Module | |
| ER815-NRQ2-<WLAN/NA> | China, 5G 5G NR LTE-FDD LTE-TDD WCDMA | n1/n3/n5/8/n28A/n41/n77/n78/n79 B1/B3/B5/B8 B34/B38/B39/B40/B41 B1/B5/B8 | WLAN: Wi-Fi <NA>: no Wi-Fi |
| ER815-NRQ3-<WLAN/NA> | Global, 5G 5G NR LTE-FDD LTE-TDD WCDMA | n1/n2/n3/n5/n7/n8/n12/n13/n14/n18/n20/n25/n26/n28/n29/n30/n38/n40/n41/n48/n66/n70 n71/n75/n76/n77/n78/n79 B1/B2/B3/B4/B5/B7/B8/B12/B13/B14/B17/B18/B19/B20/B25/B26/B28/B29/B30/B32/B66/B71 B34/B38/B39/B40/B41/B42/B43/B48 B1/B2/B4/B5/B8/B19 | WLAN: Wi-Fi <NA>: no Wi-Fi |
| ER815-NRQ4-<WLAN/NA> | EU&APAC 5G NR LTE-FDD LTE-TDD WCDMA | n1/n3/n5/n7/n8/n20/n28/n38/n40/n41/n66/n77/n78 B1/B3/B5/B7/B8/B20/B28/B66 B38/B40/B41 B1/B2/B5/B8 | WLAN: Wi-Fi <NA>: no Wi-Fi |
| ER815-LQ20-<WLAN/NA> | China, CAT4 LTE-FDD LTE-TDD WCDMA GSM | B1/B3/B5/B8 B34/B38/B39/B40/B41 B1/B5/B8 B3/B8 | WLAN: Wi-Fi <NA>: no Wi-Fi |
| ER815-FQ58-<WLAN/NA> | EU&APAC, CAT4 LTE-FDD LTE-TDD WCDMA | B1/B3/B5/B7/B8/B20/B28 B38/B40/B41 B1/B5/B8 | WLAN: Wi-Fi <NA>: no Wi-Fi |
| ER815-EN00-<WLAN/NA> | No Module | | WLAN: Wi-Fi <NA>: no Wi-Fi |

About Us

InHand Networks is a leading IoT solutions provider founded in 2001, dedicated to driving digital transformation across industries and empowering customers to unlock their full potential and achieve accelerated growth.

We specialize in delivering industrial-grade connectivity solutions for diverse sectors, such as enterprise networks, industrial and building IoT, digital energy, smart commerce, and mobility. Our comprehensive product portfolio and services cater to various applications worldwide, including smart manufacturing, smart grid, intelligent transportation, smart retail, etc. With a global footprint spanning over 60 countries, we serve customers in China, the United States, France, Germany, the United Kingdom, Italy, and beyond.



3650 Concorde Pkwy, Suite 200
Chantilly, VA 20151, USA
T: +1 (703) 348-2988
E: info@inhand.com
www.inhand.com