

Stay Connected Anywhere

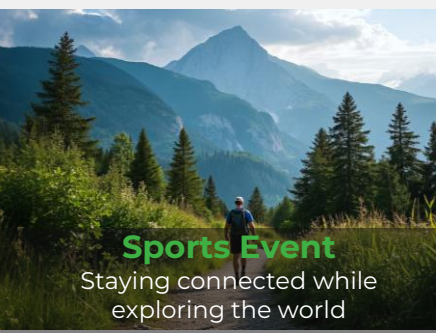
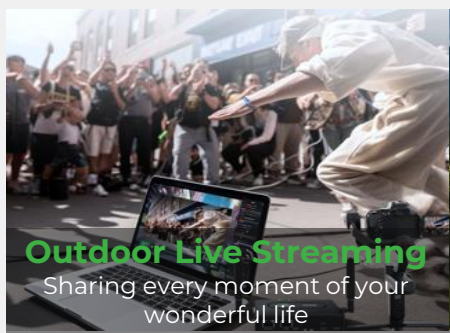
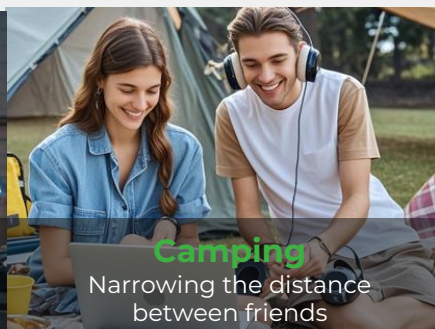
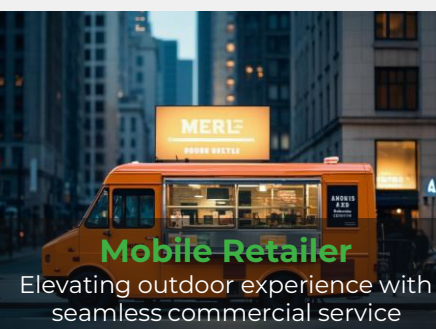
CR202-Lite Portable 4G Router

- 4G
- Wi-Fi
- Built-in battery
- Cloud-Managed



The CR202-Lite is a versatile cellular router that integrates various network access technologies, including 4G, Wi-Fi, and wired connections. This integration empowers the router with powerful network access capabilities, providing a high-speed data pathway in any scenario. For greater flexibility, the CR202-Lite features a foldable antenna and a detachable 3000mAh lithium battery, making it easy to carry. With such portability features, the CR202-Lite can ensure that users can maintain a stable network connection at any time and from anywhere.

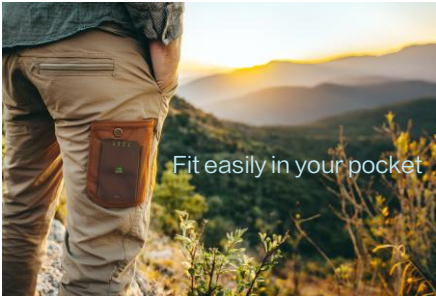
Combined with the InHand Device Manager cloud management platform, the CR202-Lite offers customers straightforward remote management services to empower your core business.



Features and Advantages

Exquisite and Portable

The CR202-Lite features a compact and small body with a foldable antenna design, making it easy to store and effortless to carry around even in a pocket when on the go, thus offering great convenience to users.



Versatile Power supply

The CR202-Lite can be powered by an adapter or a 3000mAh lithium battery for up to 8 hours, meeting the usage needs in outdoor mobile scenarios with ease. Moreover, its detachable battery design enables users to freely replace batteries for a longer runtime.



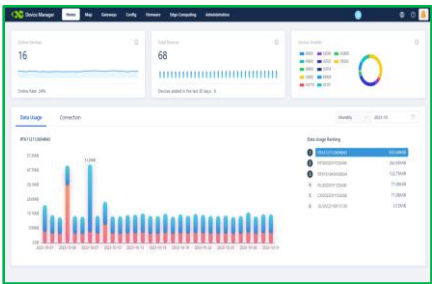
Convenient Network Access

The CR202-Lite features multiple network access modes like cellular, Wi-Fi and wired, and can support 32 terminal devices to connect at the same time, offering users convenient and efficient network access services with its strong connectivity.

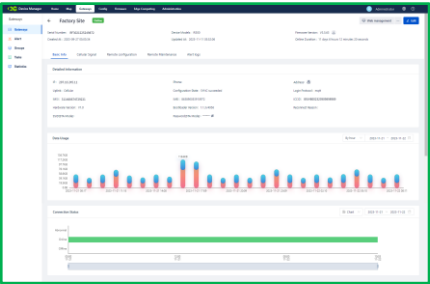


Device Manager-Cloud management

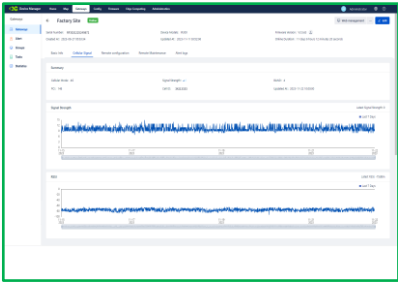
The CR202-Lite seamlessly integrates with the Device Manager, enabling real-time management of tens of thousands of distributed devices through a unified cloud platform. Monitor on-site device status anytime, anywhere, streamlining management for enhanced efficiency and cost-effectiveness!



Total Control

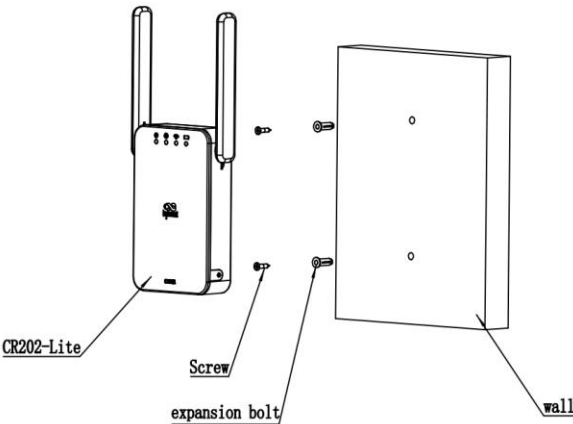
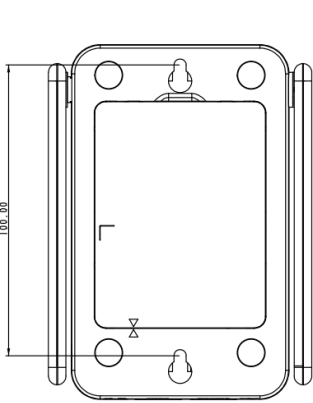
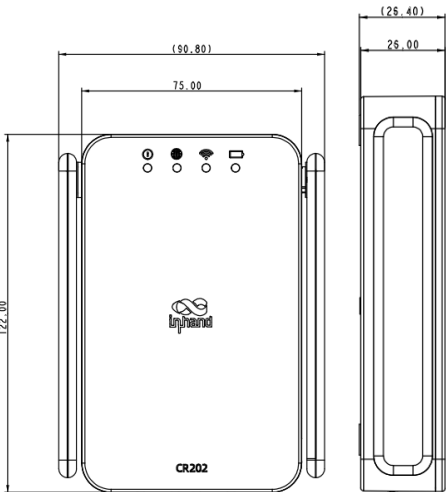


Device Details



Cellular Quality

Dimensions (mm)



Dimensions : 122*90.8*26.4(mm)

Specifications

CR202-Lite Hardware	
Hardware Platform	
Data Throughput	100Mbps
Recommended No. of Users	32
Interface Description	
Cellular	4G LTE CAT4/CAT6 CAT6: 300 Mbps (DL) / 50 Mbps (UL)
Ethernet Port	2 x 10/100Mbps WAN/LAN switchable Dual-LAN
SIM	1 x Nano SIM 1 x eSIM
Reset	Reset button
ON/OFF	ON/OFF button
Antenna Interface	2 x external 4G Cellular antennas 2 x internal Wi-Fi antennas
Lights	System/ Cellular/ Wi-Fi/ Battery
Wi-Fi	
Radio Frequency	Single band 2.4GHz
Max Transmission Bandwidth	300Mbps
Transfer Protocol	802.11 b/g/n
Operating Mode	AP/STA mode
Power Supply	
Power	TYPE-C
Power Consumption	5V/2A
Battery(Optional)	
Battery Capacity	3000mAh
Lasts up	8 hours
Mechanical Features	
Installation	Desk-top Mounting, Wall Mounting
Dimensions	122*90.8*26.4mm
Weight	235g
Housing	Plastic
Cooling	Fanless
Environment	
Working Temperature	-10° C to 50° C (14° F to 122° F)
Storage Temperature	-20° C to 60° C (-4° F to 140° F)
Protection Level	IP30
Certification	
Certificates	FCC, IC, PTCRB, Verizon, AT&T, FirstNet*, T-MOBILE, CE, UN38.3
Warranty	3 years (Battery: 1 year)

Note: The functions marked with * are not available yet.

CR202-Lite Software	
Device Management	
Device Manager	Centralized management platform Simple and intuitive dashboard User-friendly management Multidimensional visual management
Network Connection	
Network Access	APN
Access Authentication	CHAP/PAP
Network Standard	GSM/EDGE, WCDMA, TDD LTE/FDD LTE The specific frequency bands, please refer to the ordering information table.
LAN Protocol	ARP
WAN Protocol	Static IP, PPPoE, DHCP
Network Protocol	
IP Application	Ping, DHCP Server, DHCP Client, DNS relay, Telnet, IP Passthrough
Routing	Static routing
NAT	Supports NAT
Security	
Network Security	Stateful Packet Inspection (SPI), DoS attack defense; Multicast filter/Ping probe packet, Access Control List (ACL); Content URL filter, port mapping, virtual IP mapping, IP-MAC binding
Reliability	
Link Backup	Supports link backup
Dual SIM Failover	Supports dual SIM failover(Only the North American model supports)
Link Detection	Sends heartbeat packets to detect, auto redials when disconnected
Embedded Watchdog	Device runs self-detection, auto recovers from malfunctions
Network Management	
Configuration	Telnet, web, SSH
Update	Web, DeviceManager
SMS Functions	Status query, restart
Dial-on-demand	Dial-on-demand, data / SMS activation
Network Management	Supports InHand Device Manager, batch management Add the user experience plan to access the InHand Networks cloud platform to enjoy efficient and convenient services
Traffic Management	Supports data traffic threshold, traffic statistics and traffic alarm
Alarm	System restart alarm, LAN port online/offline alarm, data traffic alarm, SIM card failure alarm, etc.
Maintenance Tools	Ping, Traceroute
Status Query	System status, modem status, network connection status, and routing status

Ordering Guide

Model code: CR202-<WMNN>-WLAN-<B/NA>-Lite				
Model	<WMNN>: Cellular Types & Modules	WLAN: Wi-Fi	<B/NA>: Battery	SIM
CR202-NAC6-WLAN-<B/NA>-Lite	North America LTE CAT6 LTE-FDD: B2/4/5/7/12/13/14/25/26/29/30/66/71 LTE-TDD: B41/48	WLAN: Wi-Fi	B: Battery NA: No battery	Support eSIM card and an external SIM card
CR202-EUC4-WLAN-<B/NA>-Lite	Europe/APAC LTE CAT4 LTE-FDD: B1/3/5/7/8/20/28 LTE-TDD: B38/40/41 WADMA: B1/5/8 GSM/EDGE: B3/8	WLAN: Wi-Fi	B: Battery NA: No battery	Support external Nano SIM card
Example: CR202-NAC6-WLAN-B-Lite, CR202 series cellular router, supporting FDD, TDD networks, with Wi-Fi AP&Client modes, and equipped with a battery, supporting eSIM card and an external SIM card at the same time.				
Note: Users are asked to join InHand User Experience Plan at first time login. If user agreed to join, the router will connect to InHand DeviceManager portal. If users want to disable it, please go to Services->User Experience Plan to change the setting.				

InHand Cloud-Managed Networking Solution

Our solution encompasses cloud-managed 4G cellular routers, 5G FWA/ODU cellular routers, Wi-Fi access points, switches, and the InCloud Manager SaaS. By integrating top-tier IT management, IoT, 5G, and other technologies, we provide fast, secure, and user-friendly network solutions globally, enabling businesses to unlock boundless growth opportunities.



InCloud Manager

- Centralized management
- Efficient zero touch deployment
- Simplified network configuration
- Multi-dimensional security
- Multiple intelligent strategies



5G FWA02

- High-speed 5G, DL 4.76Gbps, UL 1.25Gbps
- 802.11ax, maximum speed 3600Mbps
- 2.5G ETH, WAN/LAN
- Link backup, cellular failover, load balancing
- Wall and desktop installation



5G Outdoor Unit

- High-speed 5G, DL 4.76Gbps, UL 1.25Gbps
- 2Gbps throughput
- 2.5G ETH, WAN/LAN, PoE
- IP67, -30~70° C, GPS
- Wall & pole mounting with adjustable angles

About Us

InHand Networks is a leading IoT solutions provider founded in 2001, dedicated to driving digital transformation across industries and empowering customers to unlock their full potential and achieve accelerated growth.

We specialize in delivering industrial-grade connectivity solutions for diverse sectors, such as enterprise networks, industrial and building IoT, digital energy, smart commerce, and mobility. Our comprehensive product portfolio and services cater to various applications worldwide, including smart manufacturing, smart grid, intelligent transportation, smart retail, etc. With a global footprint spanning over 60 countries, we serve customers in China, the United States, France, Germany, the United Kingdom, Italy, and beyond.



3650 Concorde Pkwy, Suite 200
Chantilly, VA 20151, USA
T: +1 (703) 348-2988
E: info@inhandnetworks.com
www.inhandnetworks.com