

Simple Connectivity, Convenient Life.

CPE02 5G Router

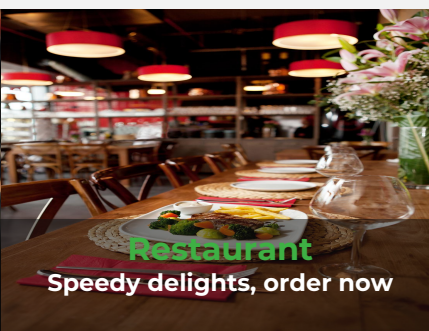
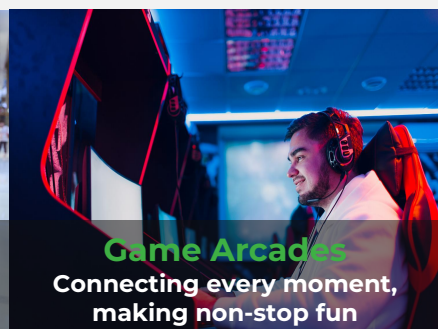
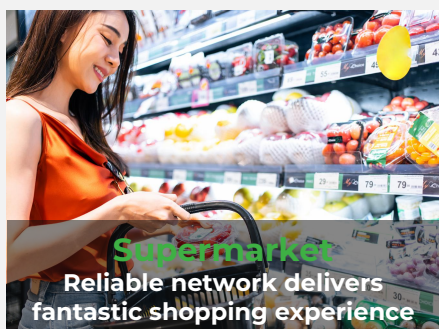
• 5G SA/NSA

• Cloud-Managed

• Wi-Fi6 AX5400

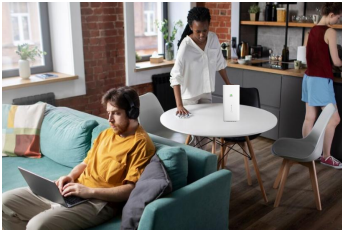


CPE02 is an indoor CPE solution launched by InHand, based on a 5G Qualcomm X62 Module design. It converts 5G/4G cellular signals into Wi-Fi signals, providing maximum rate AX5400 Wi-Fi 6 high-speed internet access. It also integrates with the InCloud Manager platform, enabling IT teams to manage devices in bulk, greatly improve management efficiency.

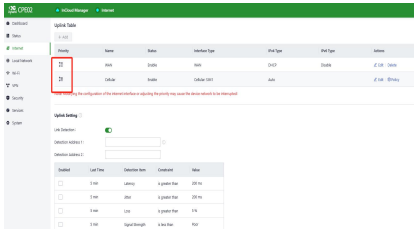


Features and Advantages

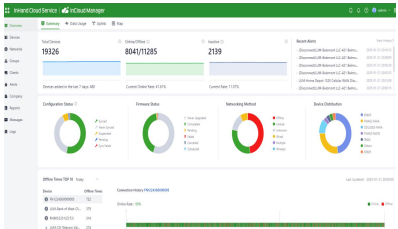
- Convenient Cellular Access with High-speed 5G**
Paired with a 5G cellular module supporting DL 3.4G and UL 550M, the CPE02 can provide high-bandwidth, low-latency network solutions for various commercial scenarios.
- High-speed Wi-Fi6**
The CPE02 supports dual-band Wi-Fi 6 with 2.4GHz and 5GHz, offering a maximum rate of up to 5400Mbps. It also supports multiple SSIDs and various encryption settings.
- Plug & Play Multifunctional Router**
CPE02 supports plug-and-play operation and can be easily used without requiring specialized IT expertise



- Outstanding Reliability**
With automatic failover and load balancing, you can easily build redundancy and backup systems to minimize single points of failure for seamless service continuity and minimal downtime.
- Centralized Management for Visualized Insights**
The solution helps you monitor WAN, access, and applications with end-to-end visibility all in InCloud Manager for valuable insights to optimize the network and identify areas for improvement.

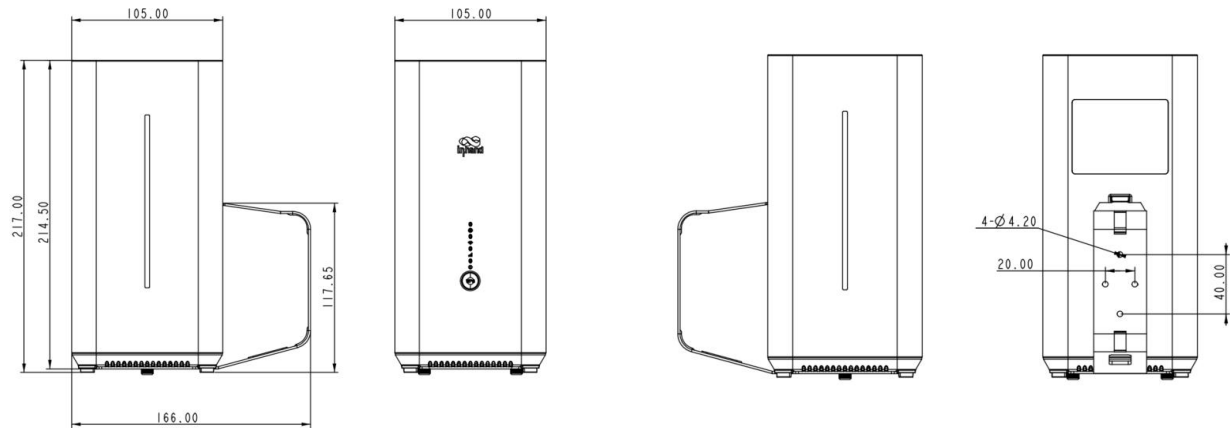


5G + Broadband Backup



Centralized Management

Dimensions (mm)



Dimensions: 105 * 105 * 217 (mm)

Product Specifications

CPE02 Hardware Specifications	
Hardware	
CPU	IPQ5018
Modem Platform	Qualcomm X62
Throughput	1 Gbps
Recommended No. of Users	200 (Wi-Fi:128)
Interfaces	
Cellular	5G SA DL:2.4Gbps,UL:900Mbps 5G NSA DL:3.4Gbps,UL:1Gbps LTE DL:1.6Gbps,UL:200Mbps, Cat19 4*4 MIMO 5G sub-6 GHz 256QAM sub-6 GHz
Ethernet Port	NANR : WAN 1*2.5GbE Port; LAN 1*GbE Port EUNR/CNNR : WAN 1*GbE Port,LAN 1*GbE Port Supports WAN/LAN switching and dual WAN
WPS Button	Supports client password-free Wi-Fi connection.
Reset Button	Pinhole reset button
SIM Card	Single-NANO SIM (Verizon embedded SIM on -NANR)
Antenna Connector	Built-in Cellular antennas x4pcs Built-in 2.4GHz&5GHz WiFi antennas x2pcs Built-in 5GHz WiFi antennas x2pcs
Wi-Fi	
Standard	Wi-Fi 802.11a/b/g/n/ac/ax
Maximum Rate	NANR :5400 Mbps EUNR/CNNR :3000 Mbps
Transmission Power	2.4GHz:17dBm 5GHz:17dBm
Antenna Gain	≤5 dBi
Power	
Standby Power	3A@12V
Peak Power	≤18W
Environment	
Storage Temp	-40 ~ 85°C (-40°F to 185°F)
Ambient Humidity	5 ~ 95% (non-condensing)
Working Temp	-10 ~ 50°C (14 ~ 122°F)
IP Level	IP20
Indicator	
LED	4G/5G, Wi-Fi,Signal,Power
EMC	
EMC	level 2
Mechanical Specs	
Dimensions	105 * 105 *217(mm)
Weight	930 g
Installation	Desktop installation, ear-hook installation
Certification	
CE* ,FCC ,IC ,PTCRB ,AT&T,Verizon*,T-Mobile	

Note: " * "Features not yet supported, will be supported soon

CPE02 Software Features	
Cloud Management	
InCloud Manager	Unified device access Zero-touch remote deployment Bulk remote upgrades Configuration deployment Connector remote maintenance Two-factor authentication Incloud APP
Visualization	
Dashboard	Device connectivity status Traffic statistics Cellular signal statistics Interface status Client statistics and analysis
Uplink Management	
Network Access	5G/4G, wired
Dialing Services	PPPoE, cellular automatic redial, dual SIM switching policy, APN configuration
Intelligent Links	Real-time link detection
Network Functions	
IP Protocols	IPv4,IPv6
Network Protocols	VLAN,DHCP, DNS, URL Filtering, DDNS, Fixed Address allocation, IP Passthrough, STP, ARP, ICMP
Speed Test	Support for device speed testing*
VPN	IPsec VPN, L2TP VPN, Open VPN*
Routing	Static routing
Wi-Fi	Supports multiple SSID configurations SSID Isolation,SSID hiding Guest Wi-Fi and custom splash portal* Encryption methods: WPA /WPA2 /WPA3
Security	
Admin	Password hash SHA512 Security hardened web interface Session time out Incorrect password lockout duration
Firewall	3L inbound/outbound rules Port forwarding SNAT, DNAT Access control* Black and white list filtering Domain filtering Policy routing* Traffic shaping*
Reliability	
Upgrades	Supports scheduled upgrades
Logs	Supports running logs, diagnostic logs
Events	Supports user logins, connection disconnects, device reboots, and other operational events
Alarms	Supports local email alarms on the device Supports platform SMS and email alarms
Diagnostic Tools	ICMP, packet capture, tracer

Ordering Guide

Model		Model code: CPE02-<WMNN>-<WLAN/NA>	Port	Wi-Fi
		<WMNN>: Cellular Type & Module		
CPE02-NANR	US, 5G			
	5G SA	n1/n2/n3/n5/n7/n8/n12/n13/n14/n18/n20/n25/n26/n28/n29/n30/n38/n40/n41/n48/n66/n70/n71/n75/n76/n77/n78/n79		
	5G NSA	n1/n2/n3/n5/n7/n8/n12/n13/n14/n18/n20/n25/n26/n28/n29/n30/n38/n40/n41/n48/n66/n70/n71/n75/n76/n77/n78/n79		
	LTE-FDD	B1/B2/B3/B4/B5/B7/B8/B12/B13/B14/B17/B18/B19/B20/B25/B26/B28/B29/B30/B32/B66/B71	1*2.5GbE Port 1*GbE Port	Wi-Fi6 Dual- Band,Maximum m speed of 5400Mbps
	LTE-TDD	B34/B38/B39/B40/B41/B42/B43/B48		
		WCDMA	B1/B2/B5/B8/B19	
CPE02-EUNR	EU&APAC, 5G			
	5G SA	n1/n3/n5/n7/n8/n20/n28/ n38/n40/n41/n66/n77/n78		
	5G NSA	n1/n3/n7/n28/n38/n40/n41/n77/n78		
	LTE-FDD	B1/B2/B3/B4/B5/B7/B8/B20/B28/B66	2*GbE Ports	Wi-Fi6 Dual- Band,Maximum m speed of 3000Mbps
	LTE-TDD	B34/B40/B41		
		WCDMA	B1/B2/B5/B8	
CPE02-CNNR	China, 5G			
	5G SA	n1/n3/n5/n8/n28A/n41/n77/n78/n79		
	5G NSA	n1/n78/n79		
	LTE-FDD	B1/B3/B5/B8	2*GbE Ports	Wi-Fi6 Dual- Band,Maximum m speed of 3000Mbps
	LTE-TDD	B34/B38/B39/B40/B41		
		WCDMA	B1/B5/B8	



InCloud Manager

- Centralized management
- Efficient zero-touch deployment
- Simplified network configuration
- Multi-dimensional security
- Multiple intelligent strategies



5G SD-WAN Edge Router

- 5G (Sub 6)/ LTE CAT20
- Multilink Backup & Dual SIM failover
- 5*Gigabit Ethernet port, dual WAN
- 802.11ac dual-band, 1200Mbps
- SD-WAN, VLAN, VPN networking



5G Outdoor Unit

- High-speed 5G, DL 4.76Gbps, UL 1.25Gbps
- 2Gbps throughput
- 2.5G ETH, WAN/LAN, PoE
- IP67, -30 ~ 70° C, GPS
- Wall & pole mounting with adjustable angles

About Us

InHand Networks is a leading IoT solutions provider founded in 2001, dedicated to driving digital transformation across industries and empowering customers to unlock their full potential and achieve accelerated growth.

We specialize in delivering industrial-grade connectivity solutions for diverse sectors, such as enterprise networks, industrial and building IoT, digital energy, smart commerce, and mobility. Our comprehensive product portfolio and services cater to various applications worldwide, including smart manufacturing, smart grid, intelligent transportation, smart retail, etc. With a global footprint spanning over 60 countries, we serve customers in China, the United States, France, Germany, the United Kingdom, Italy, and beyond.



3650 Concorde Pkwy, Suite 200
Chantilly, VA 20151, USA
T: +1 (703) 348-2988
E: info@inhand.com
www.inhand.com